

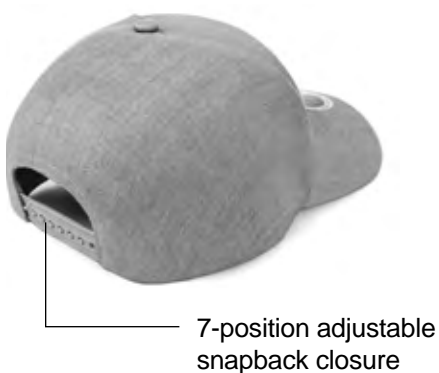
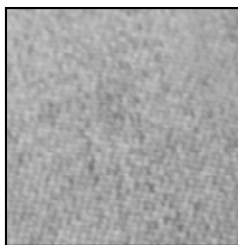
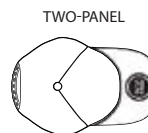


Tahoma 2 Panel Cap

IV152

Product Features:

- 85/15 Acrylic/Wool with 100% polyester lining
- 2-panel



Available Colours and PMS Colours

Textile fabric colours are subject to dye lot variation and will not be exact match to print pantone reference



BLACK
Black 6C



DARK
HEATHER
433C



LIGHT
HEATHER
426C



NAVY
2768C



OLIVE
7771C

IV152 - Tahoma 2 Panel Cap

Hat Measurements

Size	OSFM
Total Exterior Circumference	61 cm
Crown Height	17 cm
Bill Length	7 cm
Front One Panel Width	19 cm

Printing Instructions

The use of a cap press machine is recommended. These machines operate similarly to standard models, featuring a hard metal or board base. To prevent marks or creases during application, a softer material should be placed and securely fastened on top of the base. Failure to follow this method may lead to crease issues on the cap.

RECOMMENDED APPLICATION TEMPERATURE: 150-160°C (302-320°F)
Ensure that the soft material used can withstand this temperature.